

The objectives of the Norwin Historical Society are to preserve and promote the history of the Norwin area and educate the community about the people, places and events that comprise the history of Irwin, North Irwin, and North Huntingdon Township. In brief, we pursue these goals through the following activities:

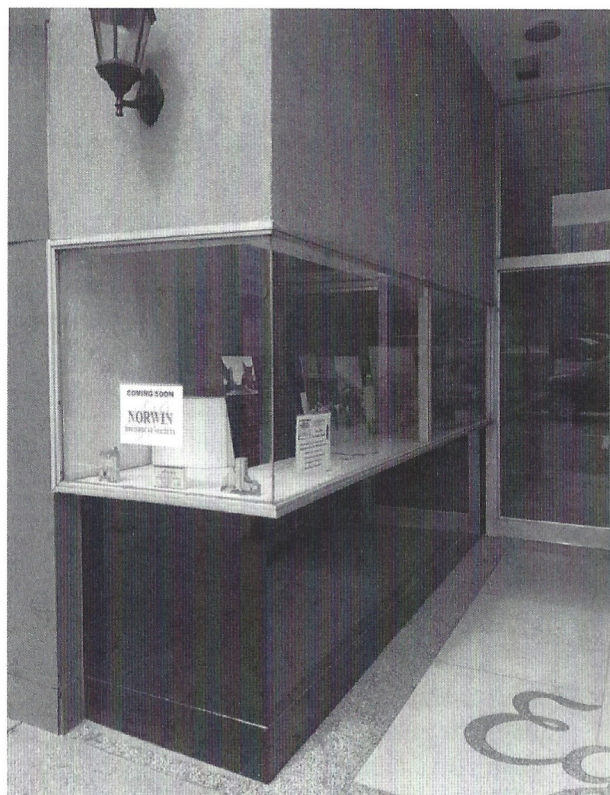
- A "Homes for the Holidays" tour in December
- An "Antiques on Main" sale in September
- Caring for the grounds of the historic Brush Creek Associate Reformed Church Cemetery
- Providing a military honor guard to honor our area's war dead on the Sunday before Memorial Day.
- Providing speakers to local organizations and area schools as requested.
- Participating in the following countywide organizations:
 - Pennsylvania Federation of Museums and Historical Organizations
 - Westmoreland County Historical Society
 - Westmoreland Heritage
 - Laurel Highland Visitors Bureau
 - The Community Foundation of Westmoreland County
 - Norwin Chamber of Commerce –Excellence In Education Program and Annual Community Picnic
 - Norwin Public Library
 - Veterans of Foreign Wars
 - Norwin School District – Educational hiking/walking trail and Local History Day
 - Eagle Scout Projects
 - Irwin Business and Professional Association
 - American Legion

Through our website, we reach out to all present and previous residents and interested visitors who share an interest in the rich history of this area. We seek local memorabilia and historical documents which help to support this goal.

We thank you again for your continued support of the Norwin Historical Society!

Sincerely,

Carl G. Huszar, President



NORWIN HISTORICAL SOCIETY

PO Box 623
304 Street
Irwin, PA 15642

info@norwinhistoricalsociety.org



NORWIN HISTORICAL SOCIETY

MEMBERSHIP INFORMATION



Preserving the history and legacy of the Norwin area.

MEMBERSHIP OPPORTUNITIES

PATRIOT - \$15 donation

1 YEAR MEMBERSHIP RECEIVES:

- 1 year subscription to our quarterly newsletter
- Presale invitation to purchase tickets to our Holiday House Tour before the general public

ADAM SAAM - \$125 donation

1 YEAR MEMBERSHIP RECEIVES:

- 1 year subscription to our quarterly newsletter
- Presale invitation to purchase tickets to our Holiday House Tour before the general public
- 2 tickets to the Holiday House Tour for the year of membership
- Acknowledgement of donation in our newsletter
- Certificate of Membership

JOHN FRANKLIN WOLF

\$250 donation

1 YEAR MEMBERSHIP RECEIVES:

- 1 year subscription to our quarterly newsletter
- Presale invitation to purchase tickets to our Holiday House Tour before the general public
- 4 tickets to the Holiday House Tour for the year of membership
- Business card size ad in our newsletter for the year of membership
- Acknowledgement of your donation in our newsletter
- Certificate of Membership

JOHN IRWIN - \$1,000 donation

5 YEAR MEMBERSHIP RECEIVES:

- 5 year subscription to our quarterly newsletter
- Presale invitation to purchase tickets to our Holiday House Tour before the general public
- 4 tickets to the Holiday House Tour for the year of membership
- Business card size ad in our quarterly newsletter during membership
- Annual Certificate of Membership
- Acknowledgement of donation on our website
- Acknowledgement of donation in our newsletter quarterly
- Opportunity to have your business cards available to public during our House Tour and Antiques on Main event
- Ad in our Holiday House Tour program
- Opportunity to have your business cards available to public in the Norwin Historical Society lobby on Main Street, Irwin
- Ad on our website



info@norwinhistoricalsociety.org

MEMBERSHIP FORM

Please return with check made out to Norwin Historical Society

PO Box 623
304 Main Street
Irwin, PA 15642

Choose your membership level

☐ **PATRIOT**
\$15 donation - 1 YEAR MEMBERSHIP

☐ **ADAM SAAM**
\$125 donation - 1 YEAR MEMBERSHIP

☐ **JOHN FRANKLIN WOLF**
\$250 donation - 1 YEAR MEMBERSHIP

☐ **JOHN IRWIN**
\$1,000 donation - 5 YEAR MEMBERSHIP

Name

Business Name

Address

Phone Number

Email: